

Example of Resorbable Scaffold Support Outcomes Over Time

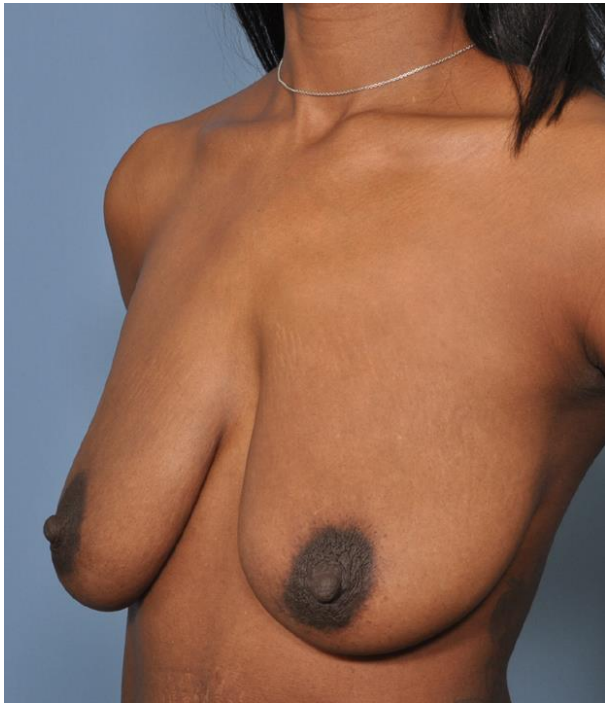


Pre-OP

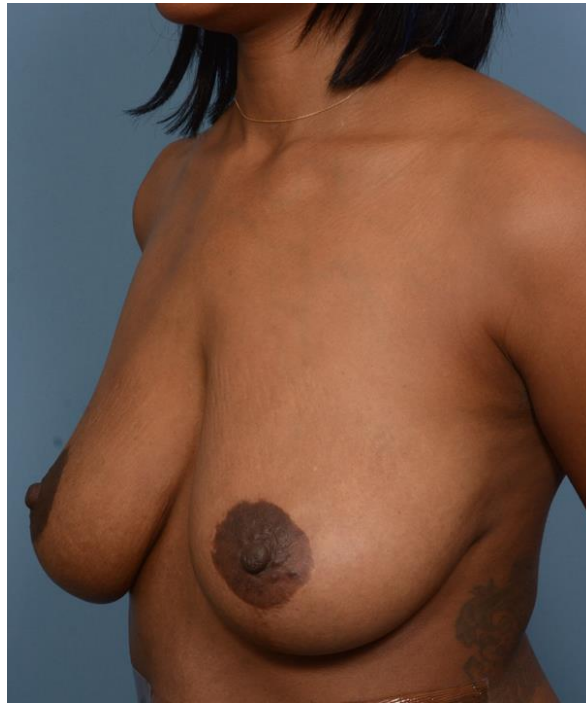
2 Years

5 Years

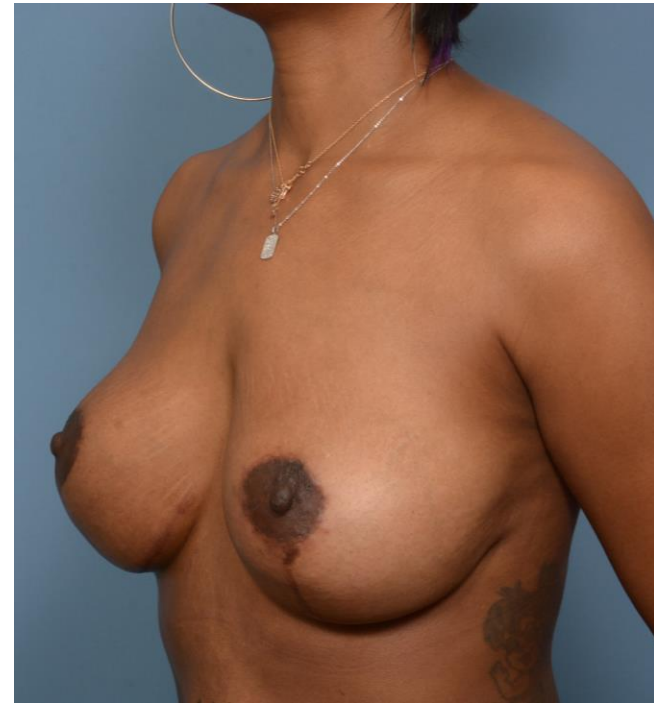
Example of Improved Tissue Quality In Pt With and W/O Scaffold Reinforcement.



Before Surgery

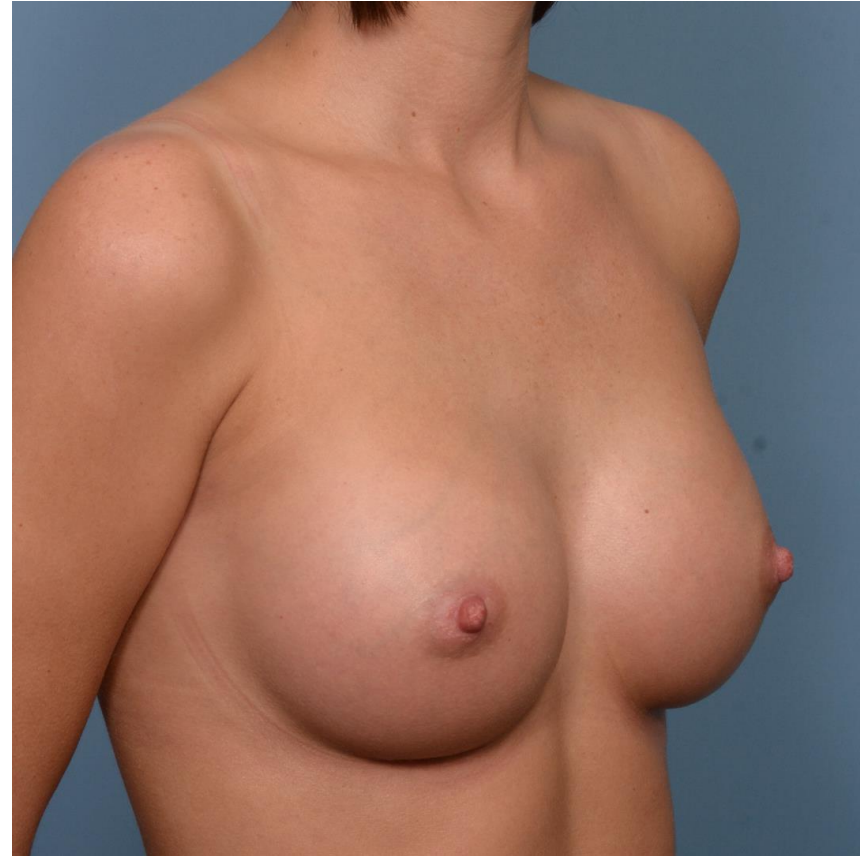


Masto (no support)



Redo w/Scaffold

Example Of Primary Prevention of Malposition In Pt With Poor Quality Soft Tissue.



Stronger tissue supporting additional workload- Durable Aesthetic Results

CAP CON Nair : 17 Months Post Capulectomy with Tissue Support

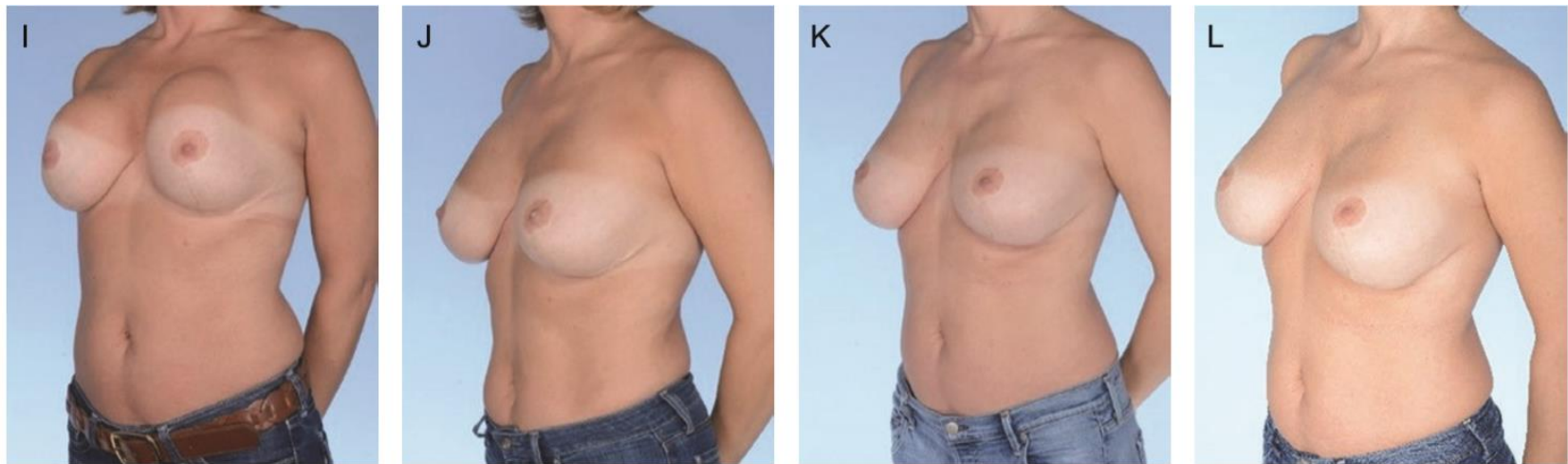


Figure 8. A 42-year-old woman (A, E, I) preoperative, (B, F, J) 1 month, (C, G, K) 4 months, and (D, H, L) 17 months postoperative site change from subglandular to subpectoral, capsulectomy with a 400-cc Sientra silicone LP implant replacement. She had a mastopexy 16 years prior followed by a breast augmentation 3 years prior. She presented with Baker Grade IV capsular contracture bilaterally. Intraoperatively, significant pectoralis retraction obviated a need to bridge the gap to the inframammary crease. Here GalaFLEX was placed directly on her implants after a near-total capsulectomy and used after a site change from subglandular to subpectoral to augment tensionless closure techniques and to break up concentric scarring from her capsular contracture.

Poor Quality Tissue Examples Where Surgeon May Recommend Additional Soft Tissue Reinforcement

